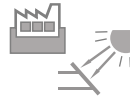
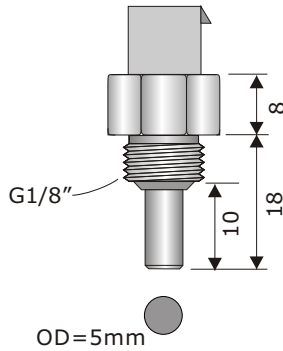
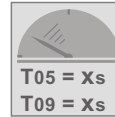
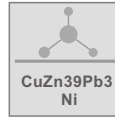
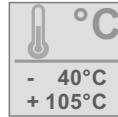


APPLICATION AREA



Temperature sensor with a connector for water heaters and for the simple mounting in pipes for the heating & solar technology as well as for the industry.

CHARACTERISTICS



TECHNICAL DATA OF THE COMPONENTS

Dimensions

Sensor housing, screw-in thread G1/8" with edging
Width across flats AF13

Connection

2-pole connector ; tinned contacts

Moulded in epoxy resin (twist protection)!

Sensor elements

Pt100 ; Pt1000 ; NTC ; PTC ; 2- wire technique

Materials

ITEM	Contact to the medium
TE4-G1/8	Nickel-plated brass ; CuZn39Pb3

Response characteristics

ITEM	
TE4-G1/8	T05 = xsec / T09 = xsec *1

COMMENTS

*1 Measured in water ; 70°C ; 0,04 m/sec