

technical data

process connection	M12x1,5 hygienic
material (process-intrusive)	316L *1
torque	metal-metal: 5...20Nm
torque	metal-PEEK: 5-10Nm

ambient conditions

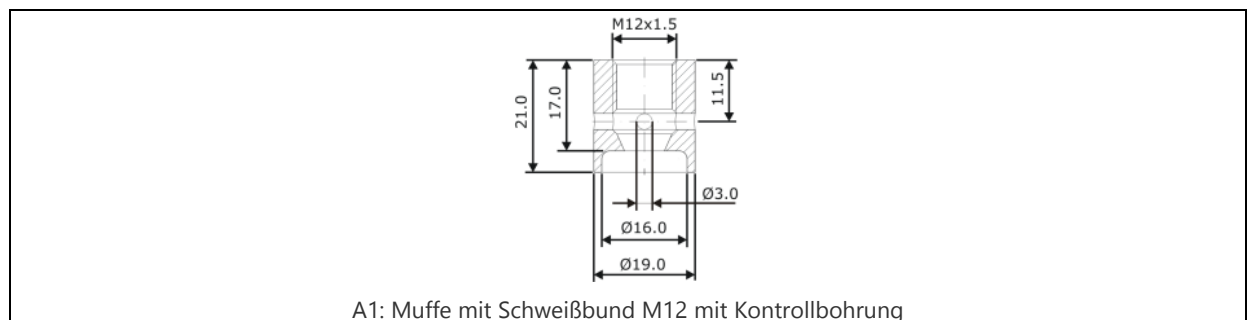
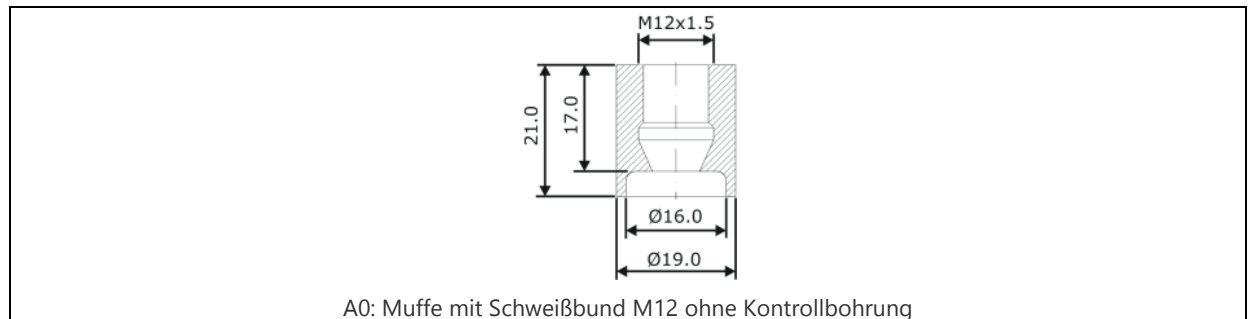
process temperature	metal-metal: max.250°C
process temperature	metal-PEEK: due to Peek max 140°C (short-term 150°C)
process pressure	metal-PEEK: max.10bar
process pressure	metal-metal: max.50bar

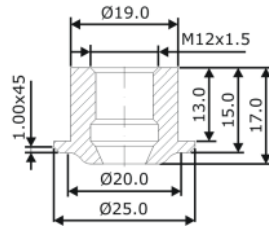
Miscellaneous

labelling	by engraving of housing, "batch-no"
-----------	-------------------------------------

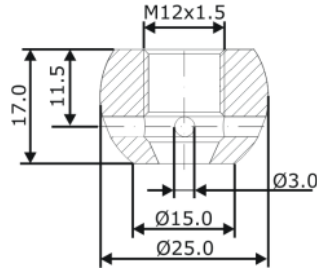
Type key configuration

Pos.:	Physical characteristics	Key	Characteristic
1	design	A0	Muffe mit Schweißbund M12 ohne Kontrollbohrung
		A1	Muffe mit Schweißbund M12 mit Kontrollbohrung
		A2	Kragenmuffe M12 ohne Kontrollbohrung
		A3	Kugelmuffe M12 mit Kontrollbohrung
		A4	Kugelmuffe M12 ohne Kontrollbohrung

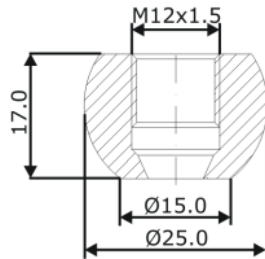




A2: Kragenmuffe M12 ohne Kontrollbohrung



A3: Kugelmuffe M12 mit Kontrollbohrung



A4: Kugelmuffe M12 ohne Kontrollbohrung

Existing configurations

Type	Order number	Item number	Old order number
PA1006	<u>PA1006-A0</u>	800-375	PE1-SB-4404
PA1006	<u>PA1006-A4</u>	800-293	PE1-KM-4404

Remarks

*1 in contact with product PB

Revision

Version	Effective from	Comment
1.0	10.12.2014 14:59:49	Typenblatt angelegt