

**TECHNICAL DATA**

process connection	G1/2" hygienic
output signal	active, max 50mA / PNP
material (process-intrusive)	PEEK *1
material casing	1.4301/1.4305
response time	<0,2sec
switching-delay	<0,3 sec
supply voltage	U <sub>b</sub> =24V ±20% (18...32VDC)
permissible load	00hm, 24 VDC, 50mA
setting	via PC-Software "Sonvis"
setting	configurations switch capacitive sensor

**Switching on/off threshold**

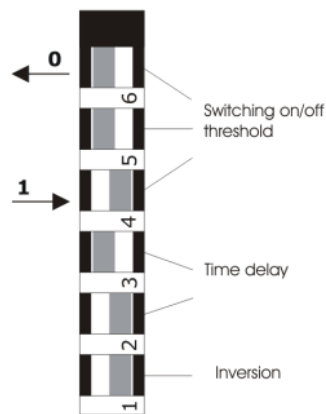
Switch	On %	Off %
6 5 4	85	83
0 0 0	97	96
0 1 0	72	70
0 1 1	60	58
1 0 0	50	48
1 0 1	11	9
1 1 0	5	4
1 1 1	95	30

adjustable via PC-software

**Delay**

Switch	Delay in sec
3 2	0 sec
0 0	2 sec
0 1	4 sec
1 0	8 sec
1 1	8 sec

**Configuration switch**



**AMBIENT CONDITIONS**

process temperature	0°C...100°C /CIP/SIP-cleaning: 0°C...150°C (30 min)
ambient temperature/ head	-10°C...+70°C
storage temperature	-20°C...+70°C
process pressure	max 10 bar
installation instructions	For mounting in a suitable mounting application / series "hygienic connect"

**MISCELLANEOUS**

labelling	by engraving of housing, "batch-no"
labelling	by labelling on housing

**SONTEC**Artikel: 800-XXX  
Type: TYPE-XXX

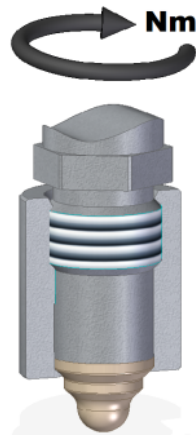
KW/LJ

Sontec Sensorbau GmbH - Am Wasserfall 6 -  
D-57368 Lennestadt - www.sontec.de**ZULASSUNGEN**

EHEDG	Hygienic Peek Connect G1/2" (HPC), Zertifikat Nummer 11/2017 *2
-------	---

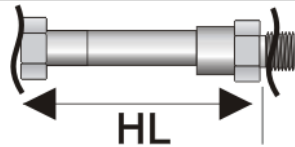
**INSTALLATION INSTRUCTIONS**

EHEDG	Anzugsmoment Peek-Spitze (HPTC-Tip) mit Muffe (HPC-Sleeve): 20Nm *3
-------	---

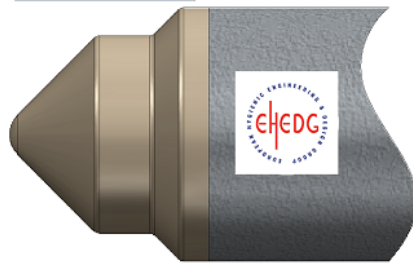


**TYPE KEY CONFIGURATION**

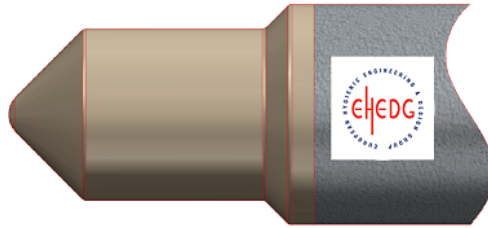
Pos.:	Physical characteristics	Key	Characteristic
1	spacer	A0	no spacer
		A1	HL=50mm
2	Peek-tip	B0	HPC-Tip No.5 *3
		B1	HPC-Tip No. 3 *3
3	sensor connection	C0	M12 connector 4pin, capacitive sensor
		C1	cable gland, PA, M16x1,5, clamping range 4,5-10mm capacitive sensor



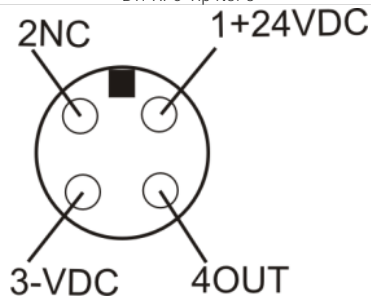
A1: HL=50mm



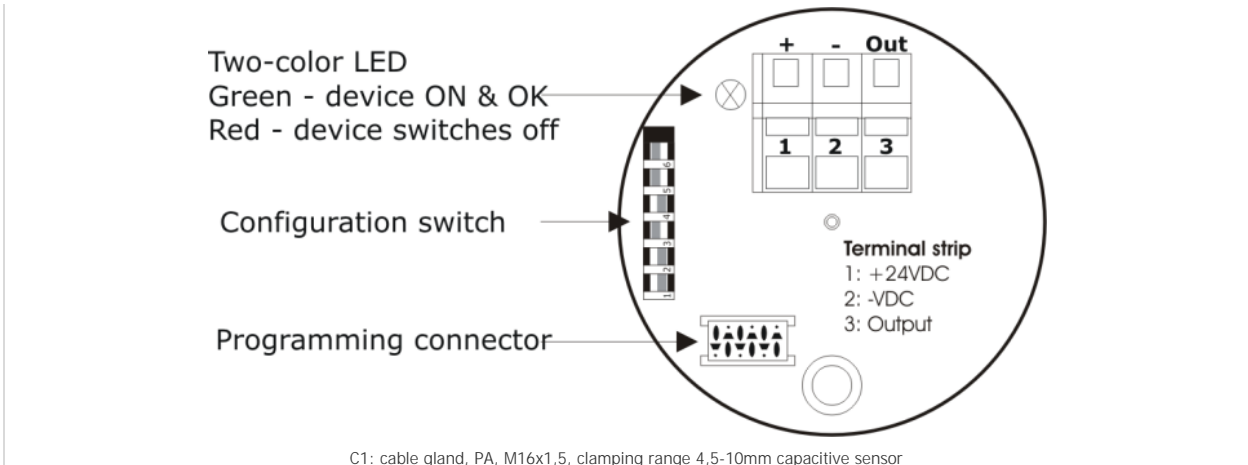
B0: HPC-Tip No.5



B1: HPC-Tip No. 3



C0: M12 connector 4pin, capacitive sensor



**EXISTING CONFIGURATIONS**

Type	Order number	Item number	Old order number
CAS-8	<a href="#">CAS-8-A0B0C1</a>	800-034	
CAS-8	<a href="#">CAS-8-A0B0C0</a>	800-220	
CAS-8	<a href="#">CAS-8-A0B0C1</a>	800-040	
CAS-8	<a href="#">CAS-8-A0B1C1</a>	800-258	
CAS-8	<a href="#">CAS-8-A1B0C1</a>	800-259	
CAS-8	<a href="#">CAS-8-A0B1C0</a>	800-658	

**REMARKS**

- \*1 conform to FDA
- \*2 Zertifikat nur gültig in Kombination einer EHEDG Prozessspitze (HPC-Tip) und Prozessadapter (HPC-Sleeve). Zulässige Prozessadapter siehe Typenblatt: PA1000. Einbauhinweise beachten!
- \*3 measured in water 70°C, 0,04m/sec

We reserve the right to make technical modifications and correction at any time without prior notice!  
This version of the data / type sheet is a translation by a partner. We assume no liability for translation errors. If the translation contains errors or ambiguities, the German version of the data / type sheet is to be used.

**REVISION**

Version	Effective from	Comment
<u>2.0</u>	07.11.2017 16:42:45	new Version
<u>1.1</u>	16.10.2013 11:33:28	Freigabe PSO 16102013
<u>1.0</u>	28.06.2013 08:43:53	Typenblatt angelegt