

TECHNICAL DATA	
process connection	G1/2" hygienic
output signal	PNP, NPN or Push-Pull, switchable
material (process-intrusive)	PEEK *1
material casing	316L
protection category	IP67 according to DIN EN 60529
switching-delay	<0,3 sec
response time	<0,2sec
supply voltage	Ub=24V (12...32VDC)
permissible load	00hm, 24VDC, 100mA
setting	mittels IO-Link *2
EMC immunity	EN 61326 (mounted in metal tank) *2
EMC emission	EN 61326 (mounted in metal tank) *2
electrical connection	M12 connector 4pin for IO-Link *2

	<p>1 +VDC 2 OUT 2 3 GND 4 OUT 1 (IO-LINK)</p>
--	--

SCHNITTSTELLEN	
type of transmission	COM2 (38,4 kBaud) *2
IO-Link Revision	1.1 *2
SDCI-Norm	IEC 61131-9 *2

AMBIENT CONDITIONS	
process temperature	0°C...100°C /max 130°C (<1h) with ambient temperature 40°C
ambient temperature/ head	-10°C...+70°C
storage temperature	-20°C...+70°C
process pressure	max 10 bar

MISCELLANEOUS	
labelling	by engraving of housing, "batch-no"
labelling	by laser on housing

Artikel: 800-XXX
 Type: TYPE-XXX KW/JJ

Sonotec Sensorbau GmbH - Am Wasserfall 6 -
 D-57368 Lennestadt - www.sonotec.de

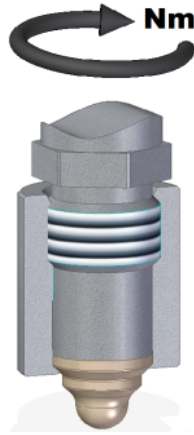
APPROVAL

EHEDG

hygienic peek connect G1/2" (HPC), certificate number 11/2017 *3

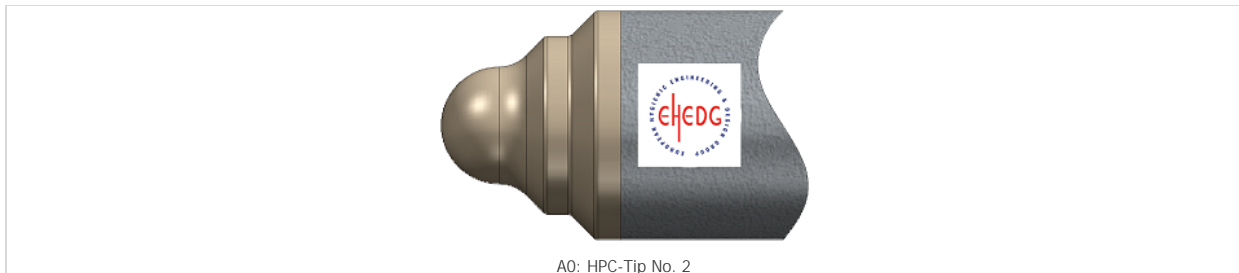
INSTALLATION INSTRUCTIONS

EHEDG

torque Peek-tip (HPC-tip) with weld-in-sleeve (HPC-sleeve):
20Nm *2

TYPE KEY CONFIGURATION

Pos.:	Physical characteristics	Key	Characteristic
1	Peek-tip	A0	HPC-Tip No. 2 *2

**EXISTING CONFIGURATIONS**

Type	Order number	Item number	Old order number
CAS-7-IO-LINK	<u>CAS-7-IO-LINK-A0</u>	800-979	

REMARKS

measured in water 70°C, 0,04m/sec

*1 conform to FDA

*2 measured in water 70°C, 0,04m/sec

*3 certificate only valid in combination of a EHDG process-tip (HPC-tip) and process connector (HPC-sleeve). Approved process adaptors see typesheet: PA1000. Respect installation details!

We reserve the right to make technical modifications and correction at any time without prior notice!

This version of the data / type sheet is a translation by a partner. We assume no liability for translation errors. If the translation contains errors or ambiguities, the German version of the data / type sheet is to be used.

REVISION

Version	Effective from	Comment
<u>1.0</u>	04.12.2017 16:18:45	Typenblatt angelegt